

An abstract painting featuring a large, curved, arch-like shape in the center. The color palette is dominated by warm tones, including deep reds, oranges, and yellows, with some darker, muted purple and greyish tones on the left side. The texture of the paint is visible, showing various brushstrokes and layering. The overall composition is dynamic and expressive.

Ralph Freeman  
another place to be





Ralph Freeman

8-25 September 2015



THACKERAY GALLERY

EST. 1968

*Front Cover*

No Greater Love (detail)

Oil on linen - 78 x 78 cm

*Overleaf*

Safe to Fall

Oil on board - 56 x 38 cm

### **another place to be**

Some three years ago, after 24 years in St Ives, I returned to London. What was left behind, but perhaps still informs my work, were the horizontals of sea, the expanded sky, treeless land of rock and moor.

Now in London, with its busy architecture, breathing parks, street life, unquiet light, these elements of Cornwall are overlaid with rising forms, running curves and the vertical horizons of the city. The land is paved, the waves are of traffic, winds are tamed and the light is quite different.

It's a fusion of experiences, which has in some way crept into my new work. This generally remains in a constant state of flux, no schemes, no systems, relying only on intent and process, with the desire to make something new, while at the same time continuing a conversation with the past.

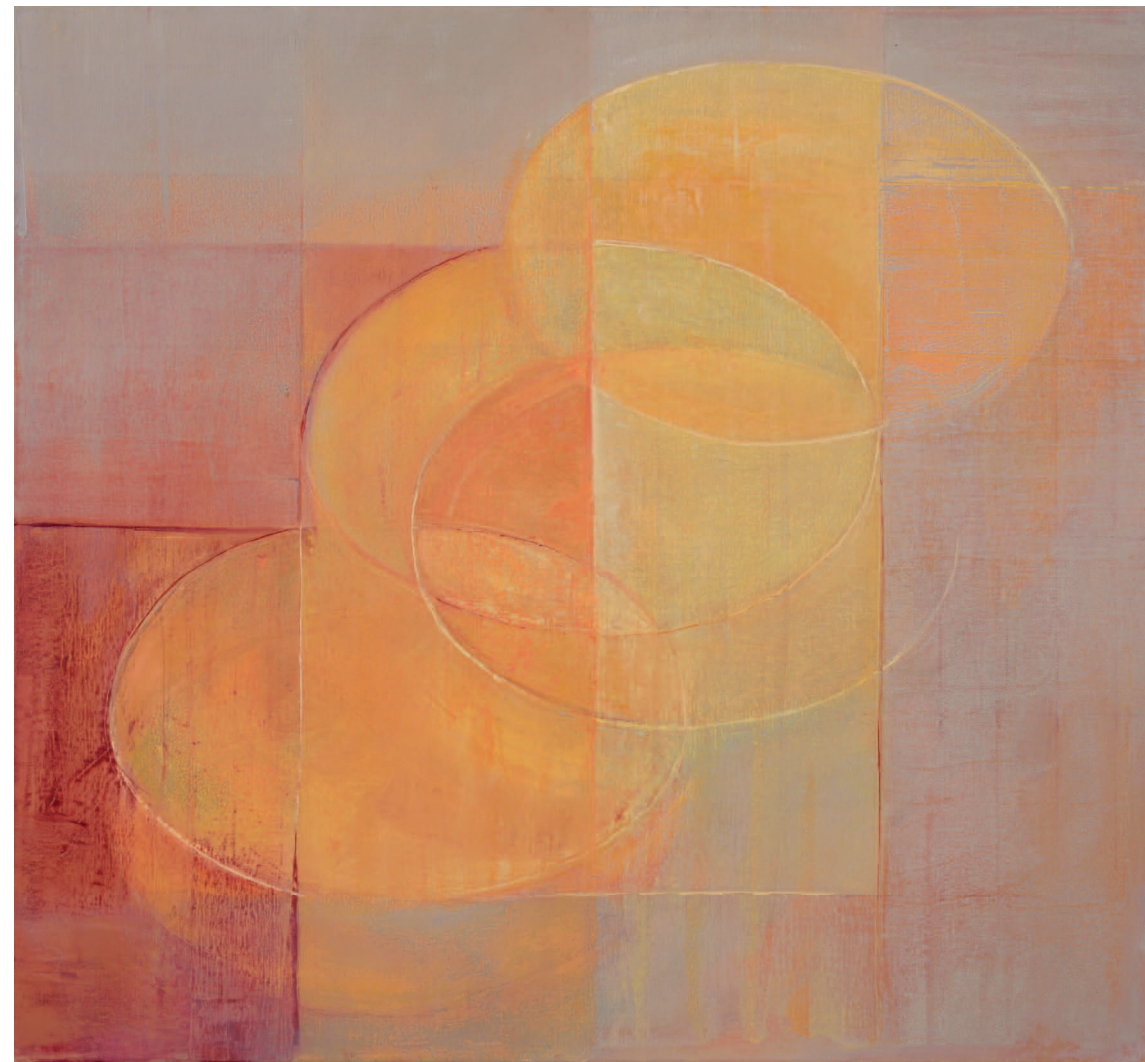
My work is as much about time, as it is about form and space because of the time it takes for any potential meaning to configure, or reveal itself.



No Greater Love  
Oil on linen  
78 x 78 cm



Descendants  
Oil on linen  
92 x 102 cm







Spinning Tales  
Oil on linen  
100 x 90 cm



Spinning Tales II  
Oil on linen  
100 x 90 cm

The Honourable Way

Oil on linen  
92 x 102 cm







Watch The Day  
Oil on linen  
76 x 64 cm



Spire  
Oil on linen  
92 x 102 cm

Hours In Balance  
Oil on linen  
100 x 115 cm





**Points In Time**  
Oil on linen  
77 x 85 cm







**Points In Time II**  
Oil on linen  
77 x 85 cm



**Points In Time III**  
Oil on linen  
77 x 85 cm

Poet's Place  
Oil on cotton  
60 x 60 cm





Inquisitive Light  
Oil on linen  
60 x 55 cm







After Twelve  
Oil on board  
51 x 38 cm

The Halves  
Oil on board  
39 x 45 cm





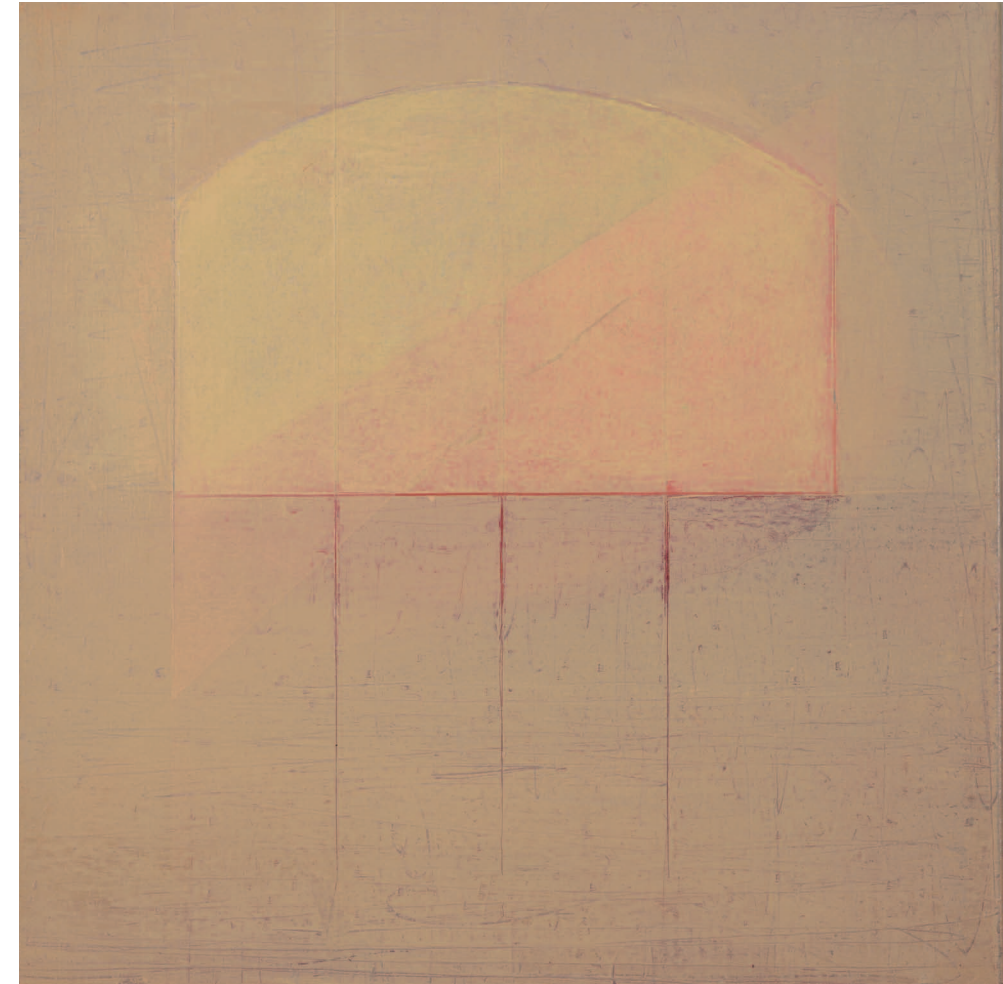


Time Lines  
Oil on linen  
58 x 38 cm

Twofold  
Oil on linen  
43 x 40 cm



Undertone  
Oil on linen  
61 x 61 cm







**Between Three**  
Oil on linen  
60 x 60 cm



**Unison**  
Oil on linen  
55 x 55 cm

Verona II  
Oil on cotton  
50 x 75 cm





## BIOGRAPHY (abbreviated)

Born in London, Ralph Freeman studied at St Martin's and Harrow Schools of Art 1961-1965.

He worked as an artist, musician, designer and art director in London and Europe until 1983, whereafter he painted exclusively. He also composes and continues to perform as a jazz pianist which informs aspects of and themes in his painting.

After moving to St Ives in 1988 he was elected member of the Newlyn and the Penwith Societies of Artists and in 1996 was awarded an Arts Council tenancy of No.6 Porthmeor Studios. He formed the St Ives Jazz Club in 1998, nominated Jazz Venue Of The Year 2015 in the All Parliamentary Jazz Awards.

In 2012 he relocated and now works from his London studio.

## Selected solo exhibitions

Tate St Ives; Freud Museum, London; Camden Arts Centre, London; Royal Cornwall Museum, Truro; Gardner Arts Centre, Sussex; Louise Hallett Gallery, London; Castello di Pomerio, Milan; Artspace, London; Millennium Gallery, St Ives (regular shows 1999 - 2010); Campden Gallery, Chipping Campden; and Thackeray Gallery, London (regular shows since 2013).

## Selected group exhibitions

Wordsworth Trust, London; New Mexico Artists for Peace, and Chicago Art Expo, USA; Edinburgh Festival, Scotland; Falmouth Art Gallery, Newlyn Gallery, Millennium Gallery, and Penwith Galleries, Cornwall; Maidstone Museum, Kent; Nunnery Gallery, London; Royal West of England Academy, Bristol; Beatrice Royal Gallery, Bath; Jean Monet Haus, Berlin; Ben Uri Gallery, London.

## Public collections

Freud Museum, London; Yad Vashem, Jerusalem; Falmouth Art Gallery, Cornwall; Yamaha, Alco Corp, Korea.

## Visiting lectureships

Central St Martin's College of Art; University College Falmouth; University of Sussex; University of Central England and Bournemouth College of Art.

**Commissions** have included murals, stage sets, photographic projects and a wide range of cultural, musical, social and corporate multimedia design work.

He has been the subject of numerous publications, more recently including *The Journal of the History of Modern Art* (G.Morra).

His work has been exhibited in the UK, Germany, Italy, Holland & USA.

## Between Rooms

Oil on linen  
60 x 60 cm



All Paintings 2014 - 2015



Published by Thackeray Gallery  
© Thackeray Gallery 2015  
Text by Ralph Freeman  
Photography by Douglas Atfield

# THACKERAY GALLERY EST. 1968

18 THACKERAY STREET • KENSINGTON SQUARE • LONDON W8 5ET • T: 020 7937 5883

[www.thackeraygallery.com](http://www.thackeraygallery.com) • [enquiries@thackeraygallery.com](mailto:enquiries@thackeraygallery.com)

Tuesday – Friday: 10am – 6pm, Saturday: 11am – 4pm